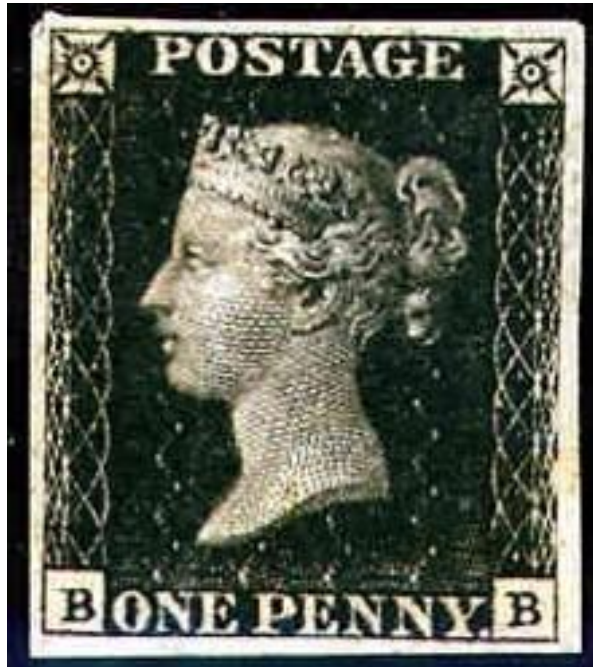


RIT
Plate Identification of
Great Britain Penny Red
by Deep Computer Scanning

By Larry Rausch

Penny Black
1840



Penny Red (star)
1841



Penny Red 4 corner
1864-1880





**1d Four Corner Red
1864 to 1880**

12 Columns A to L

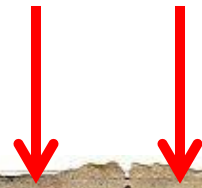
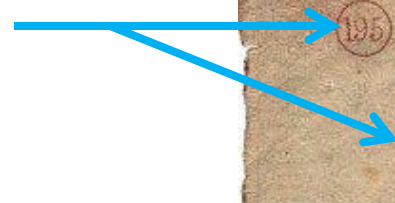
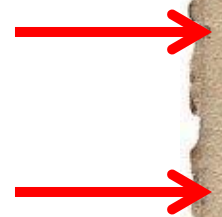


Plate Number 195



20 Rows A to T



12 Column A to L
20 Rows A to T

12 x 20 = 240 Different stamps per sheet

151 Different plate numbers

240 x 151 = 36240 different stamps



unk 072 CJ

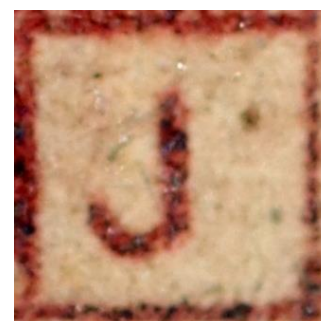
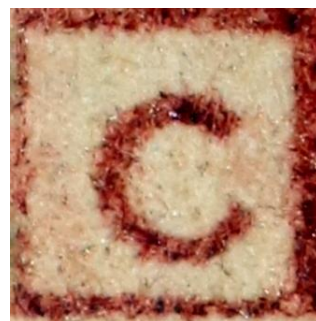
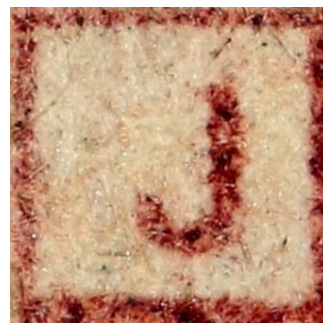
30,000 Digital Images provided

Research Goal
Identify Plate Number





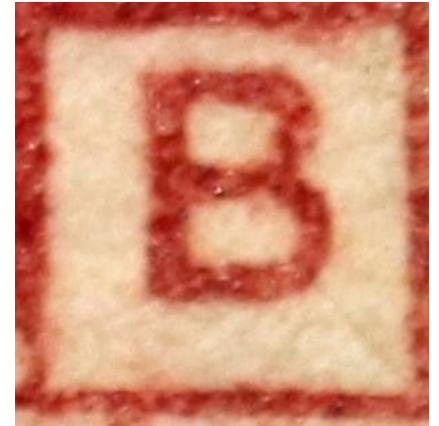
unk 072 CJ



Location of corner letters
can identify plate number



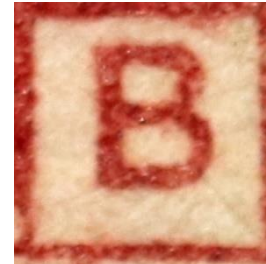
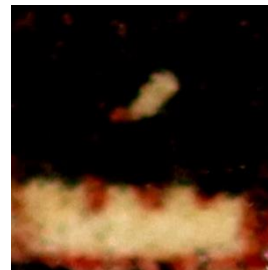
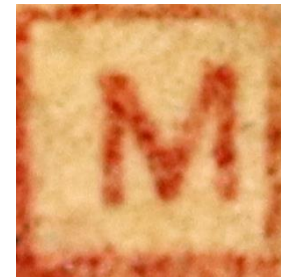
unk 078 MB



Location of corner letters
can identify plate number



091 078 MB



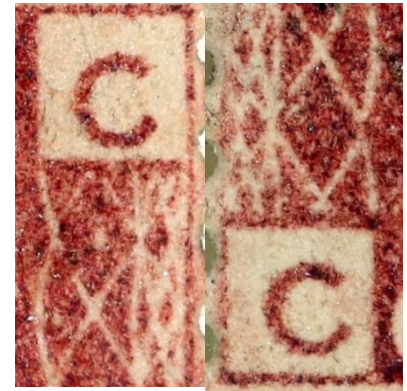
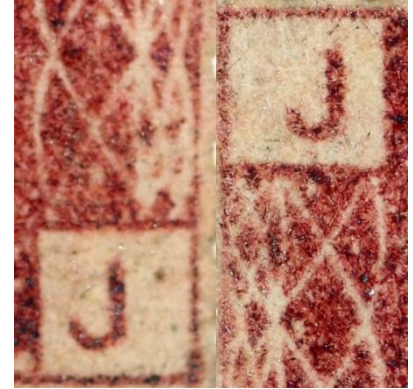
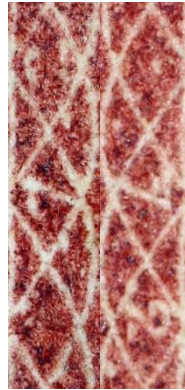
Reference 078 MB



unk 072 CJ

Three Scanning Areas

Resolution: 224x224 each



Testing

30,000 Plate ID digital photos

21,000 Scanned

9,000 tested against scans

Result First Test

151 Plates: 88.9 % Accuracy

8001 out of 9000

**"That's
all
folks!"**

